

Urchin system set-up

07.03.2024

Protocols:

Urchin care protocol:

<https://paper.dropbox.com/doc/Urchin-care-protocol--CSQY4KTy0BVIFu4WQIEyTkOWAQ-Oj0cwVqwbTZvbXFvoXfF0>

OR pdf version:

https://cpetak.github.io/Urchin_care_protocol.pdf

Filter changing protocol for the RO system:

<https://paper.dropbox.com/doc/Filter-changes--CSSCr00WUgtRAuw0XCyFiMrRAQ-c8SO9pDzZdrgeWXFpJmrY>

OR pdf version:

https://cpetak.github.io/Filter_changes.pdf

Bucket
for dirty
water



Bin to make fresh
artificial sea water in



Used to get the
clean water into the
tanks

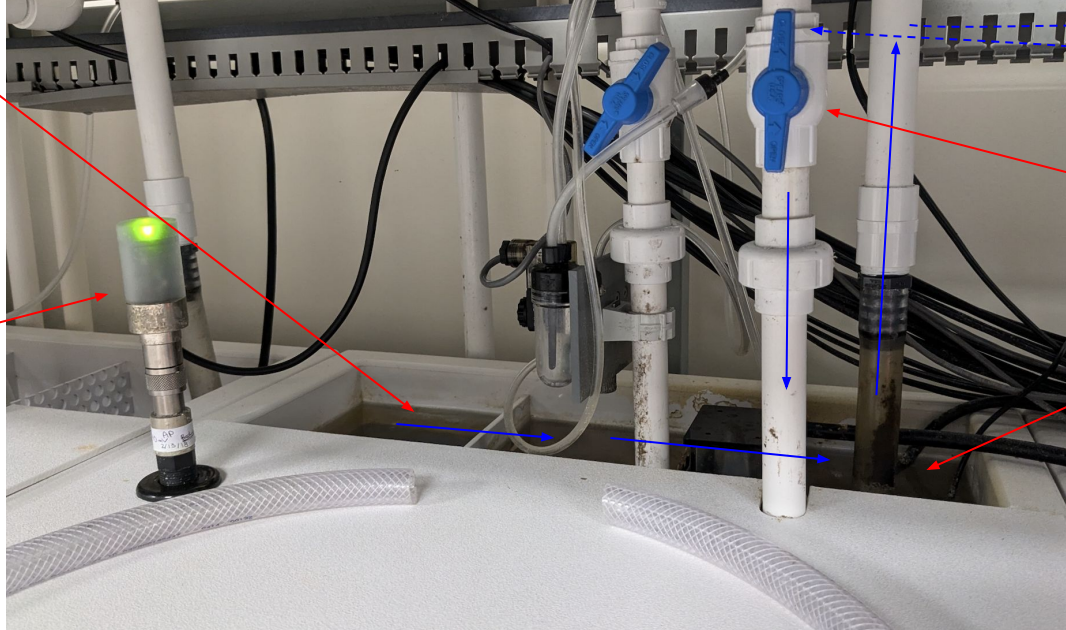
Filter

Temperature
probe status
signal

Water flow
intensity
knob

Pump

Chiller



Temperature
probe



Flow of water

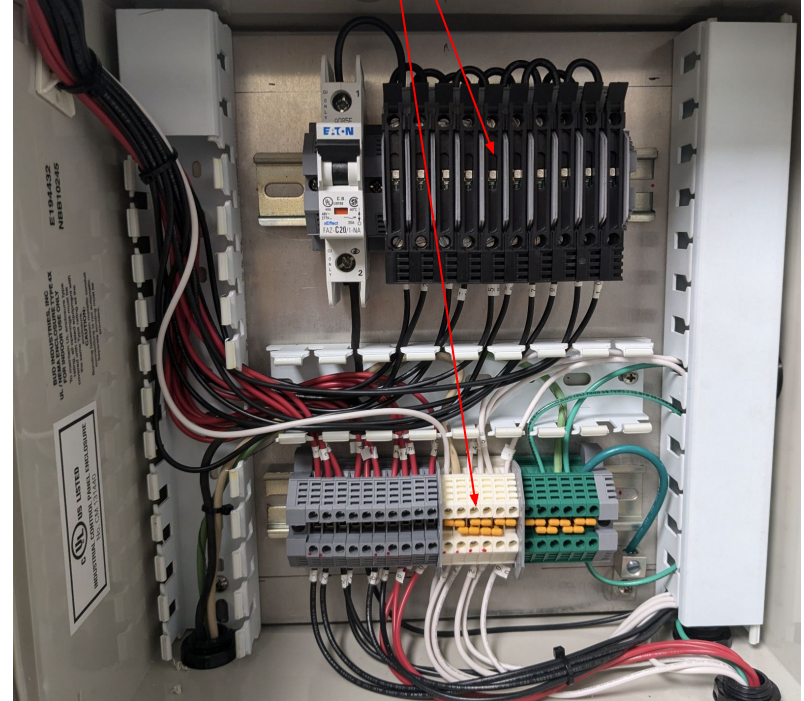
Tip: if pump not working, check if fuse needs to be replaced.

Pump switches

Outside:

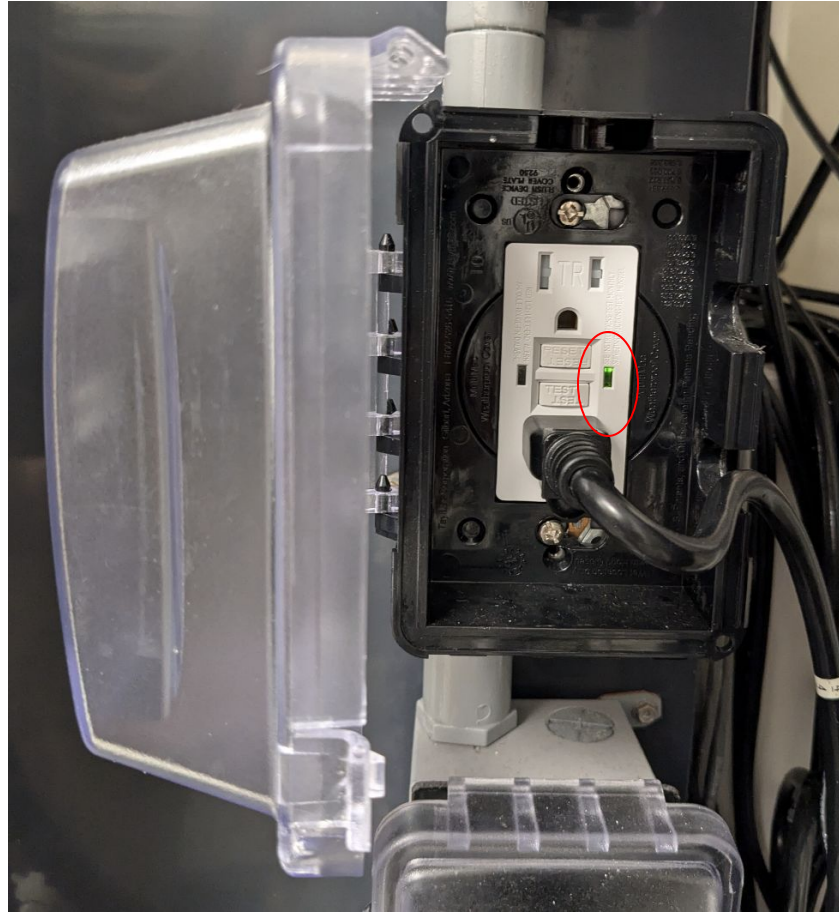


Inside:



Cont. prev slide

Tip: Alternatively, check that light is green. Try to push Reset if it's red. If that doesn't work, you'll likely need to replace the white part of the plug.



The computer

Tip: To modify settings, you will need to log in.
Username: Administrator, password: urchins

Time setting for the chill cycle
(next slide).

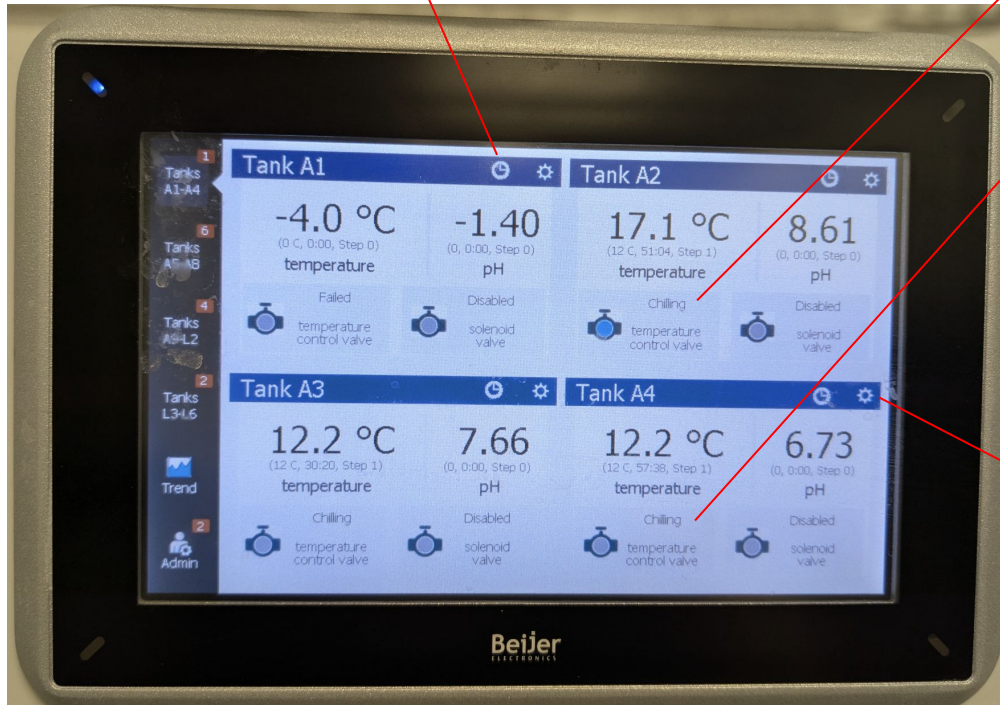
Chilling is on, actively chilling.

Chilling is on, not chilling right now
as the current temperature is correct.

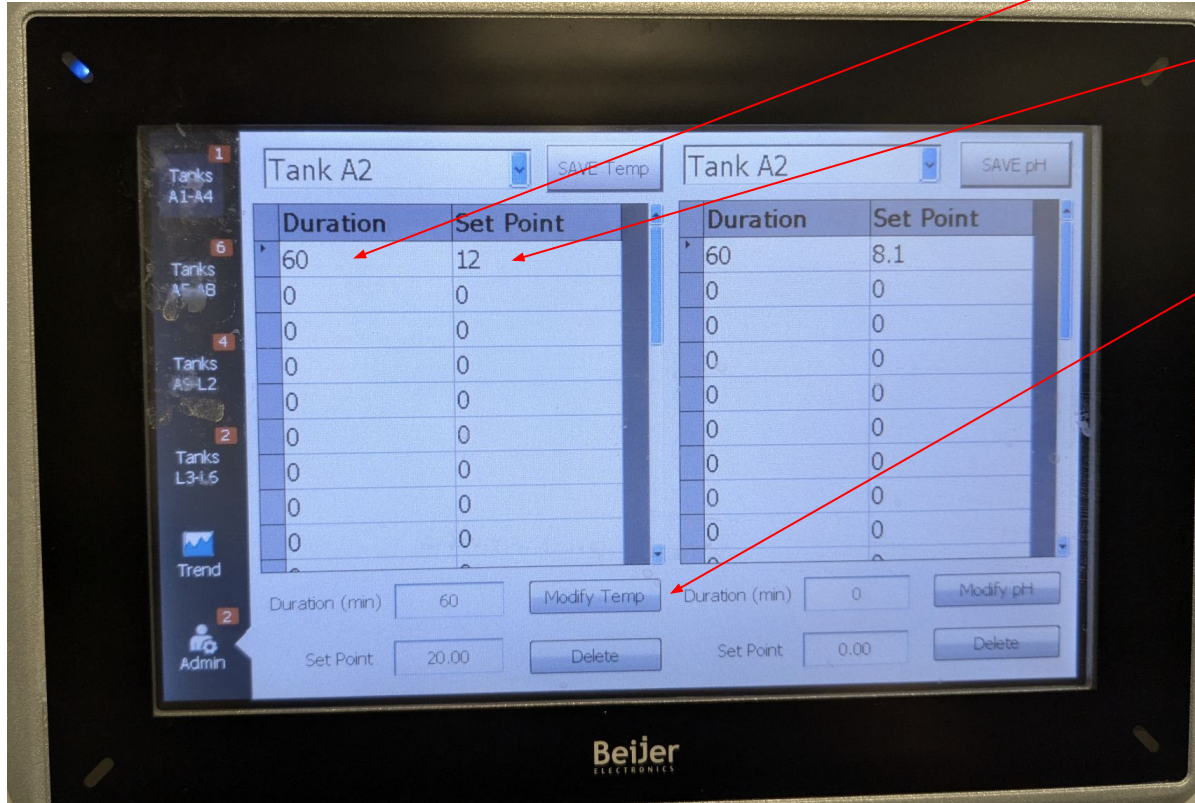
If it says Failed/Disabled instead of
Chilling: see later slide about the
settings window.

Settings window for that tank.

Note: Be patient! The system is slow! Give it
plenty of time before you conclude that your
click didn't register.



Time setting for chill cycle



Duration in minutes

Temperature in Celsius

Click to change duration settings.

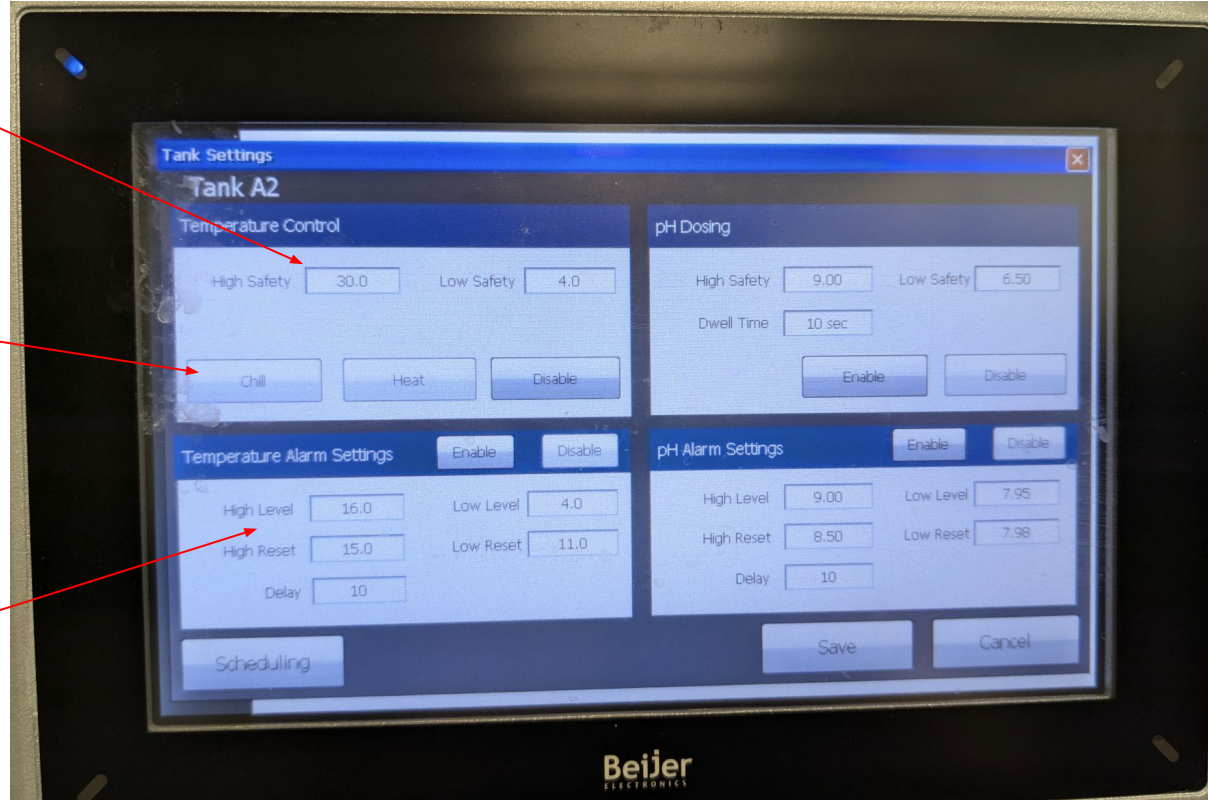
Image shows 12C for all time (there is 1 cycle, repeated over and over again).

Settings window for specific tank

System will be disabled beyond these limits.

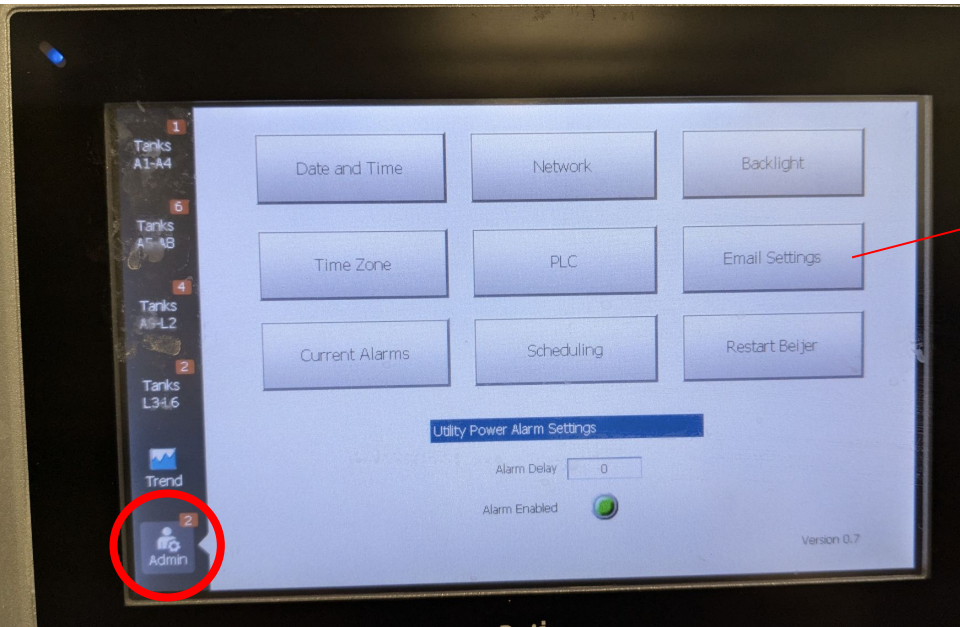
If home screen shows Failed/Disabled, try clicking Chill (or first Disable, then Chill to restart in case of an error)

Email alarm settings, max and min temperature at which alarm is triggered.

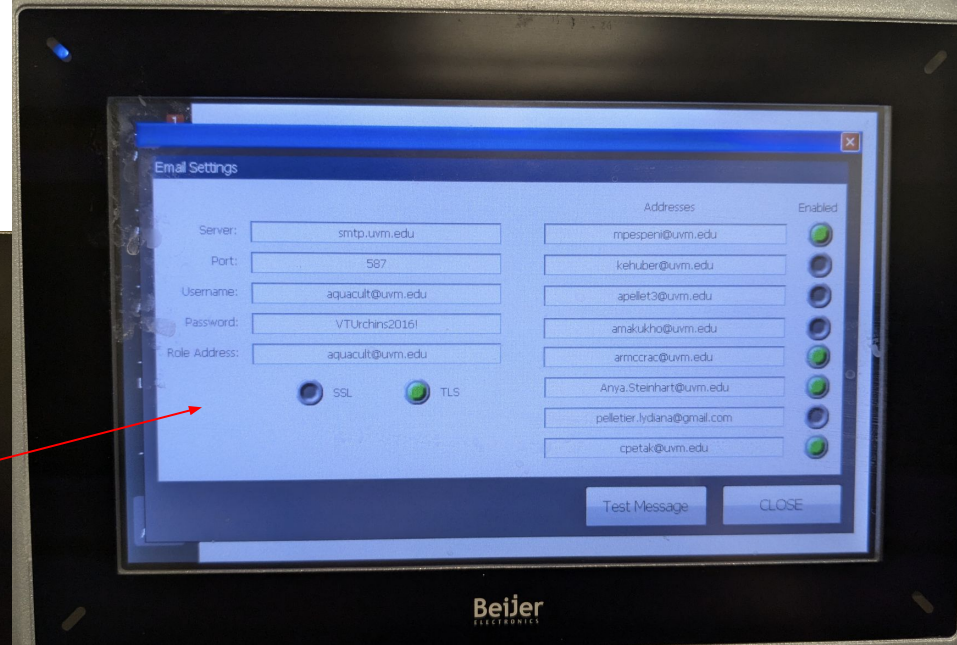


Adding email address to alarm system

1.

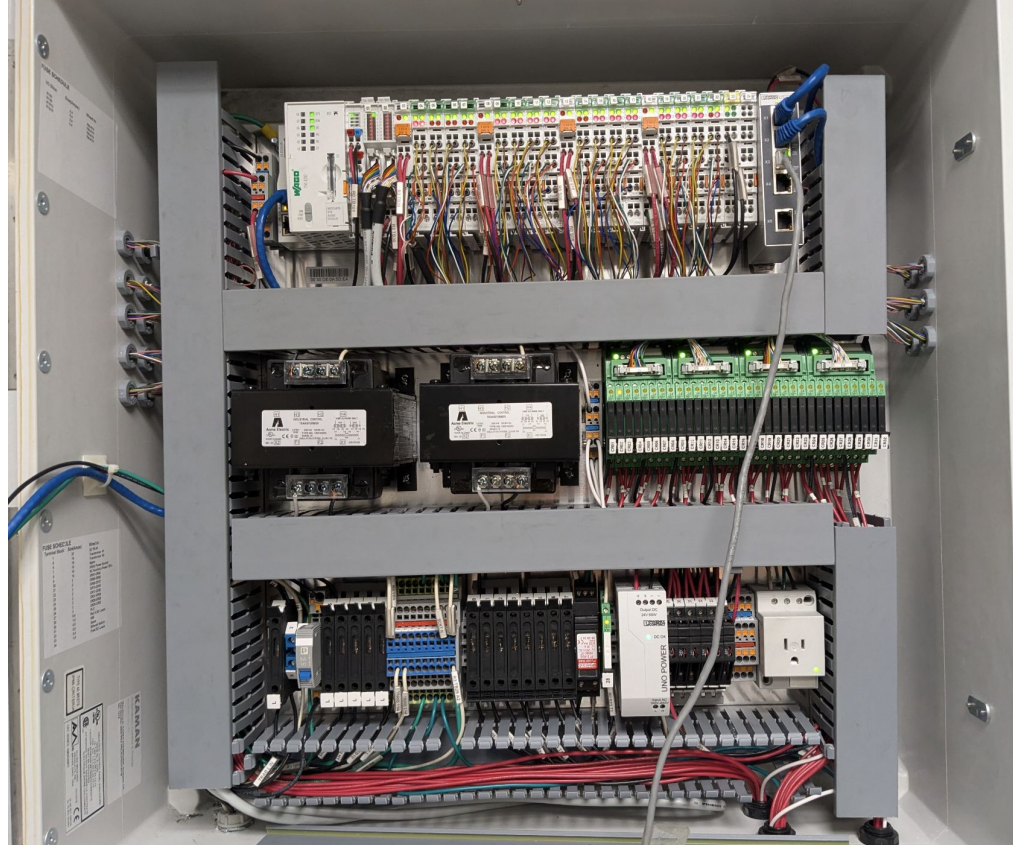


2.

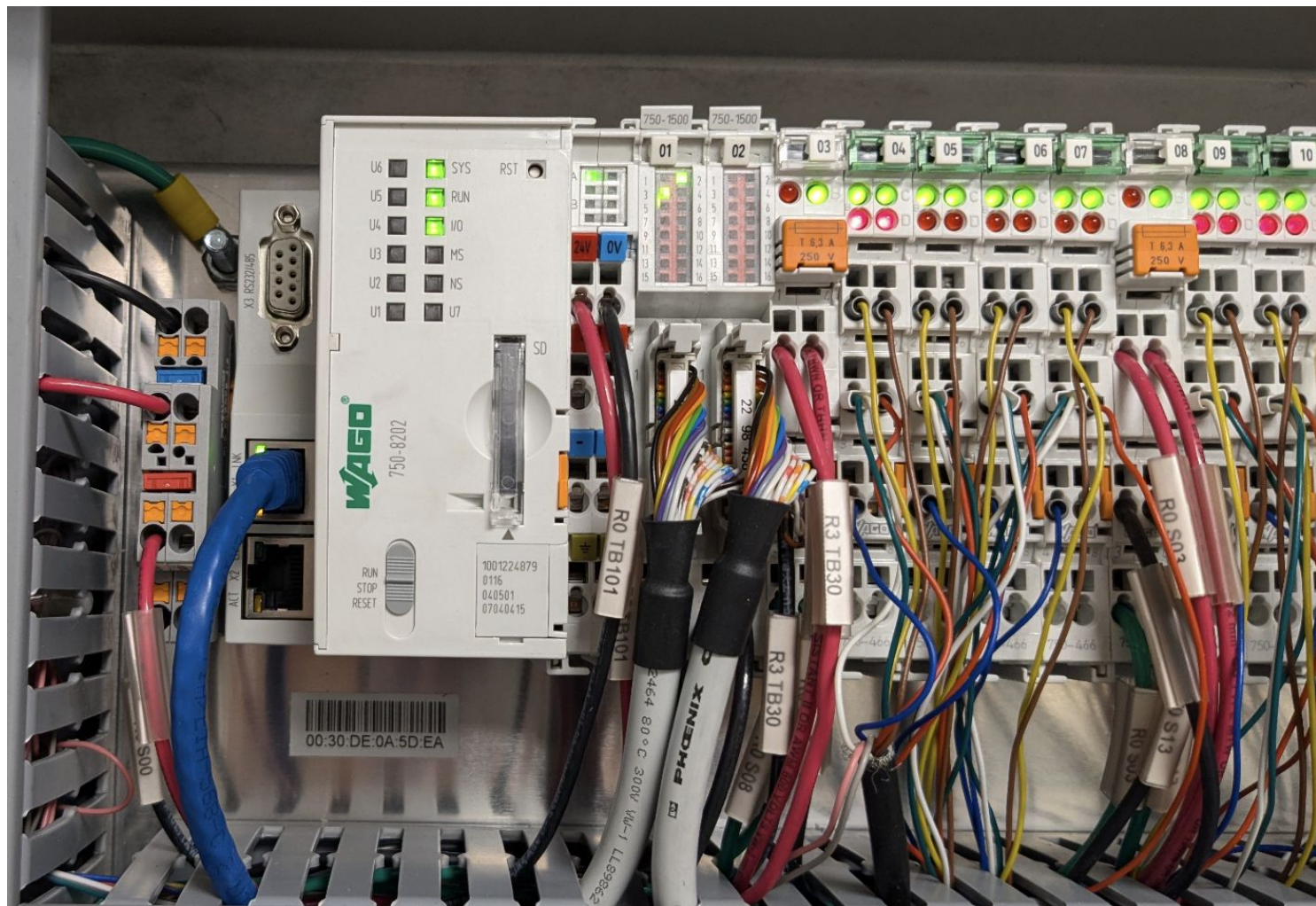


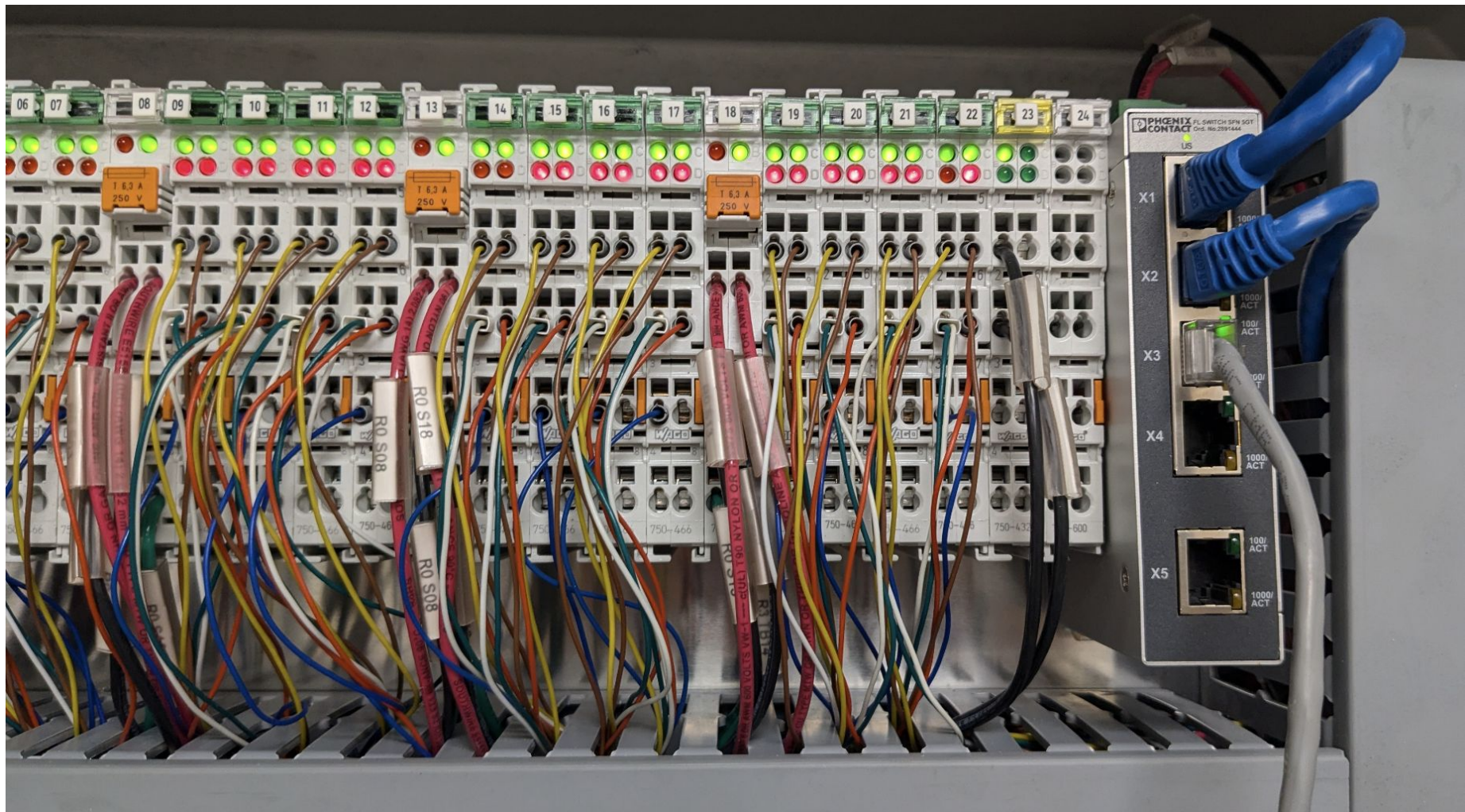
The brain of the computer

For reference during troubleshooting, this is what the inside should look like



Magnified on
next slides





H1 **H3** **H2** **H4**
Acme Electric INDUSTRIAL CONTROL TRANSFORMER
LISTED 5088 250 VA 50/60 Hz
TYPE NO. CE010250
SERIES CE
INSULATION SYSTEM CLASS 105
MADE IN CHINA
REV. 00 **X2** **F1** **F2** **X1** A50-702429

USE CU WIRE ONLY
120 240
H1 H3 H2 H4 H1 H3 H2 H4
X1 X2

H1 **H3** **H2** **H4**
Acme Electric INDUSTRIAL CONTROL TRANSFORMER
LISTED 5088 250 VA 50/60 Hz
TYPE NO. CE010250
SERIES CE
INSULATION SYSTEM CLASS 105
MADE IN CHINA
REV. 00 **X2** **F1** **F2** **X1** A50-702429

USE CU WIRE ONLY
120 240
H1 H3 H2 H4 H1 H3 H2 H4
X1 X2

CR01
CR02
CR03
CR04



